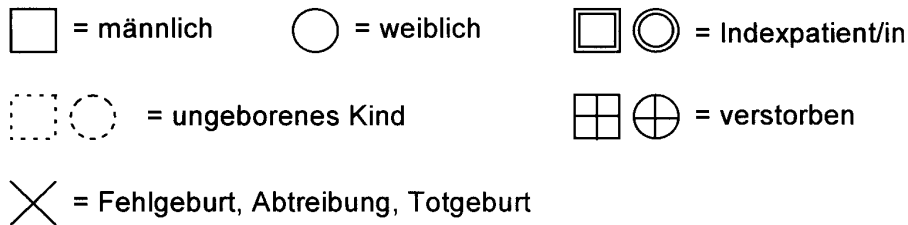
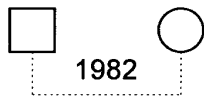


## Die Arbeit mit Genogrammen

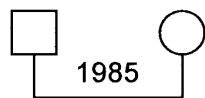
Genogramme dienen der übersichtlichen Darstellung von komplexen Familiensystemen



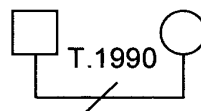
Unverheiratete Paare



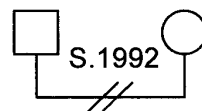
Eheschließung mit Datum



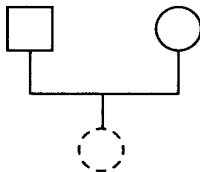
Trennung der Eheleute



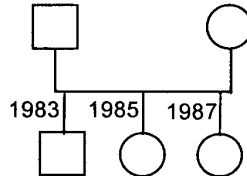
Scheidung



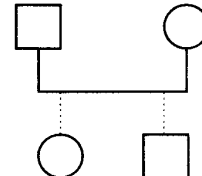
Schwangerschaft



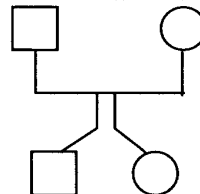
Kinder (in der Geschwisterreihe, links das älteste Kind)



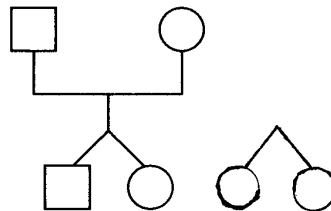
Adoptiv oder Pflegekinder



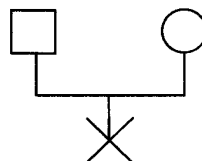
Zweieiige Zwillinge



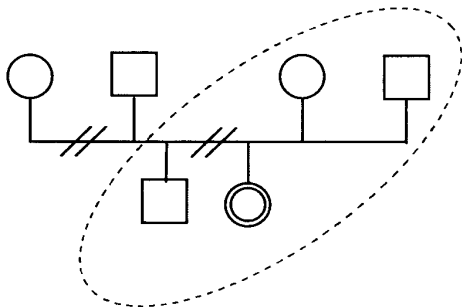
Eineiige Zwillinge



Abtreibung/Fehlgeburt/Totgeburt



Mitglieder im Haushalt einer Indexperson



Familiäre Interaktionsmuster

